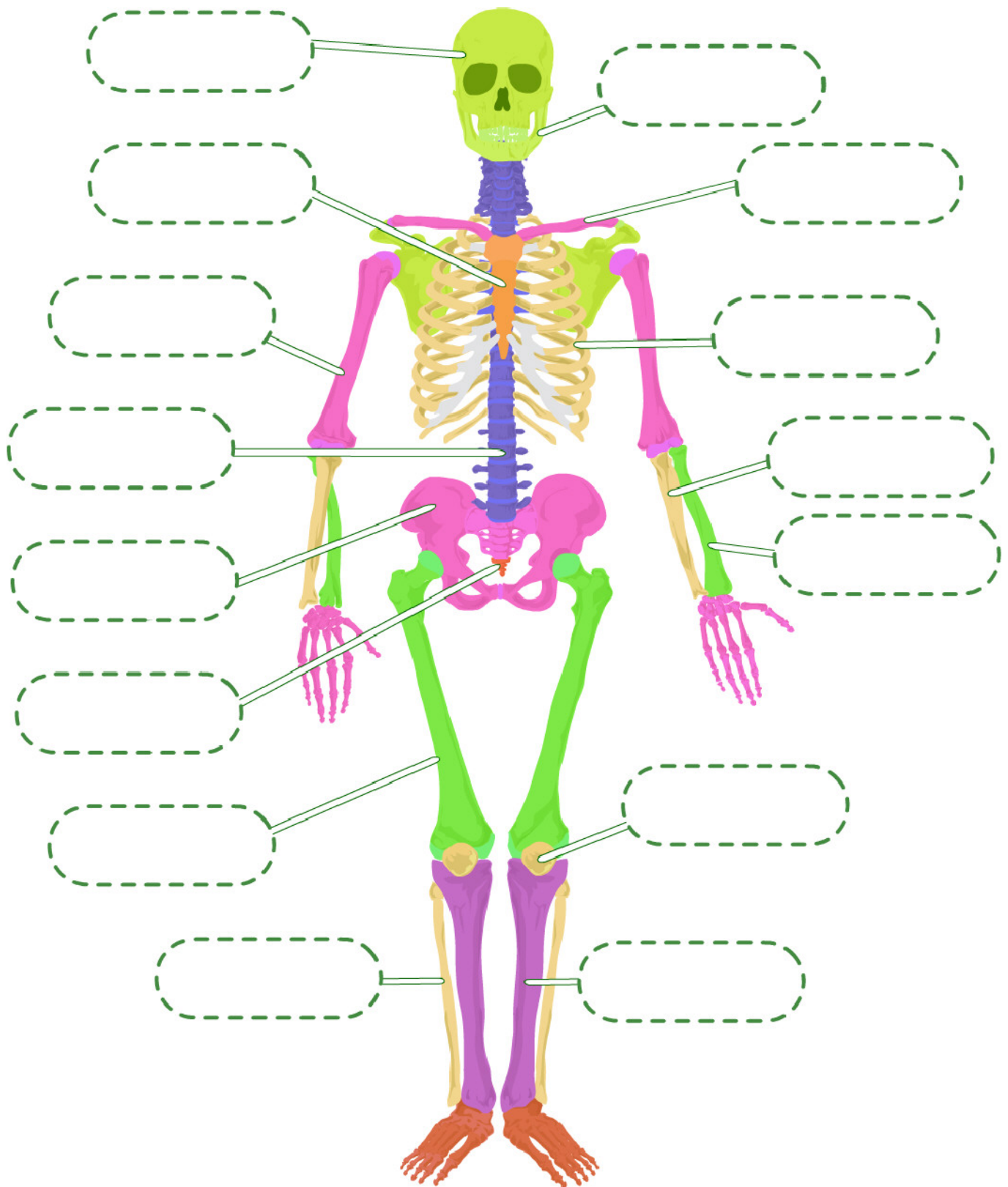


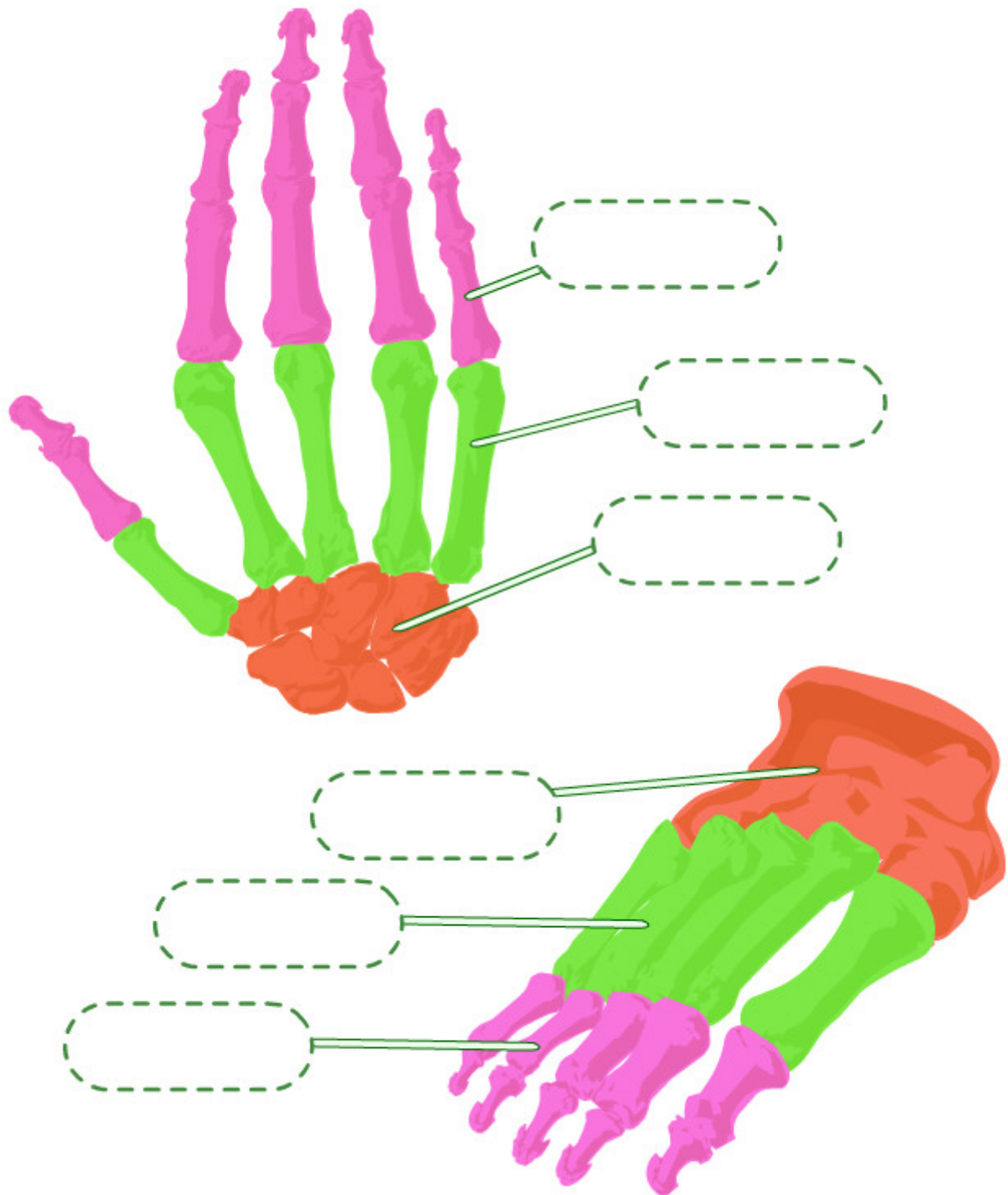
The human skeleton



Put the following terms into the correct positions on the diagram:

- "cranium (skull)" "mandible (jaw)" "backbone (spine)" "clavicle (collar bone)"
"sternum (breast bone)" "rib" "humerus" "ulna" "radius" "coccyx"
"femur" "patella (kneecap)" "pelvis" "fibula" "tibia"

Bones of the hands and feet



Put the following terms into the correct positions on the diagram:

"phalanges" "metacarpals" "carpals" "tarsals" "metatarsals" "phalanges"

Visit www.echalk.co.uk and use "The Human skeleton" resource to help you complete this worksheet.