

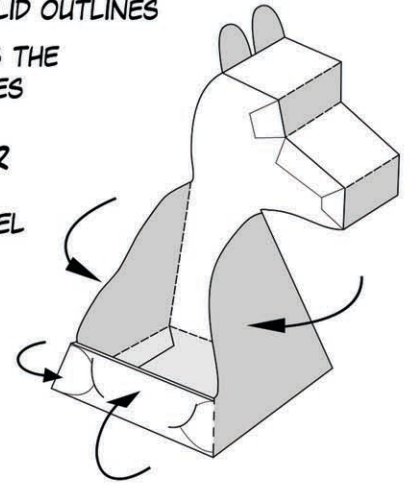
# 3D ERNIE ILLUSION

CUT OUT, FOLD AND ASSEMBLE (SEE DIAGRAM)

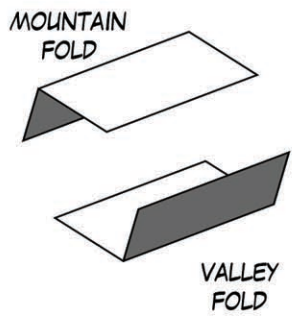
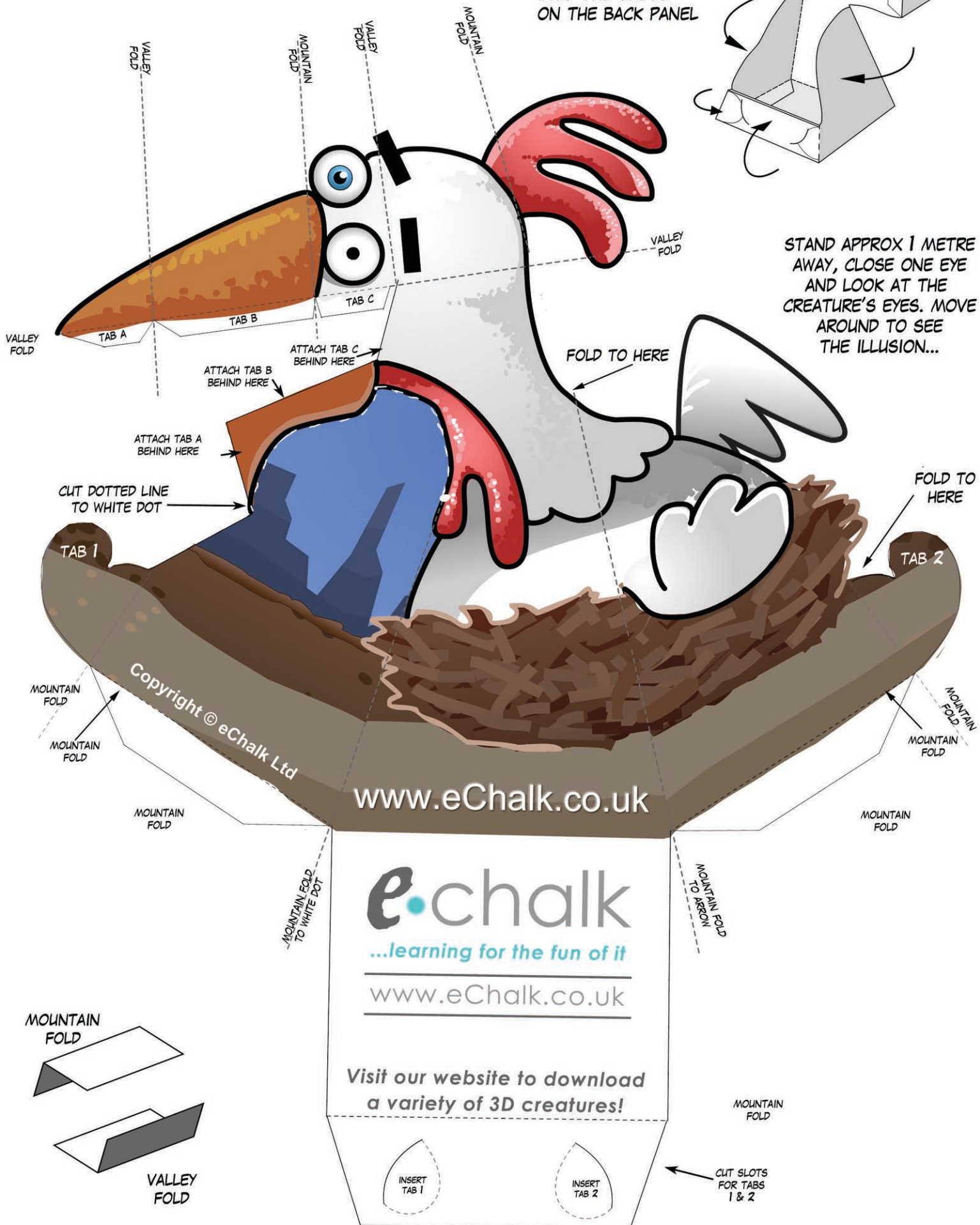
CUT ALONG THE SOLID OUTLINES

FOLD ALONG THE DOTTED LINES

INSERT TABS 1 & 2 INTO THE SLOTS ON THE BACK PANEL



STAND APPROX 1 METRE AWAY, CLOSE ONE EYE AND LOOK AT THE CREATURE'S EYES. MOVE AROUND TO SEE THE ILLUSION...



e.chalk  
...learning for the fun of it  
www.eChalk.co.uk

Visit our website to download a variety of 3D creatures!

