

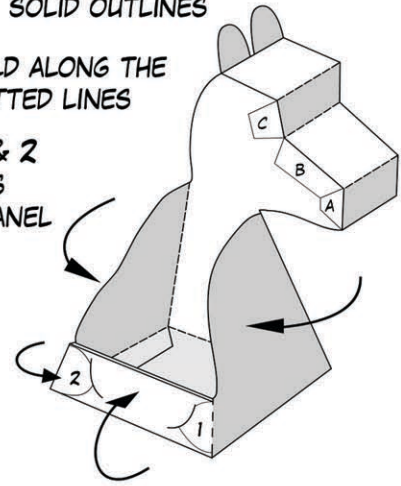
3D KNIGHT ILLUSION

CUT OUT, FOLD AND ASSEMBLE (SEE DIAGRAM)

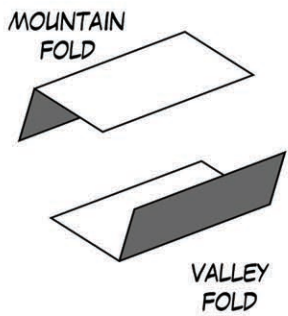
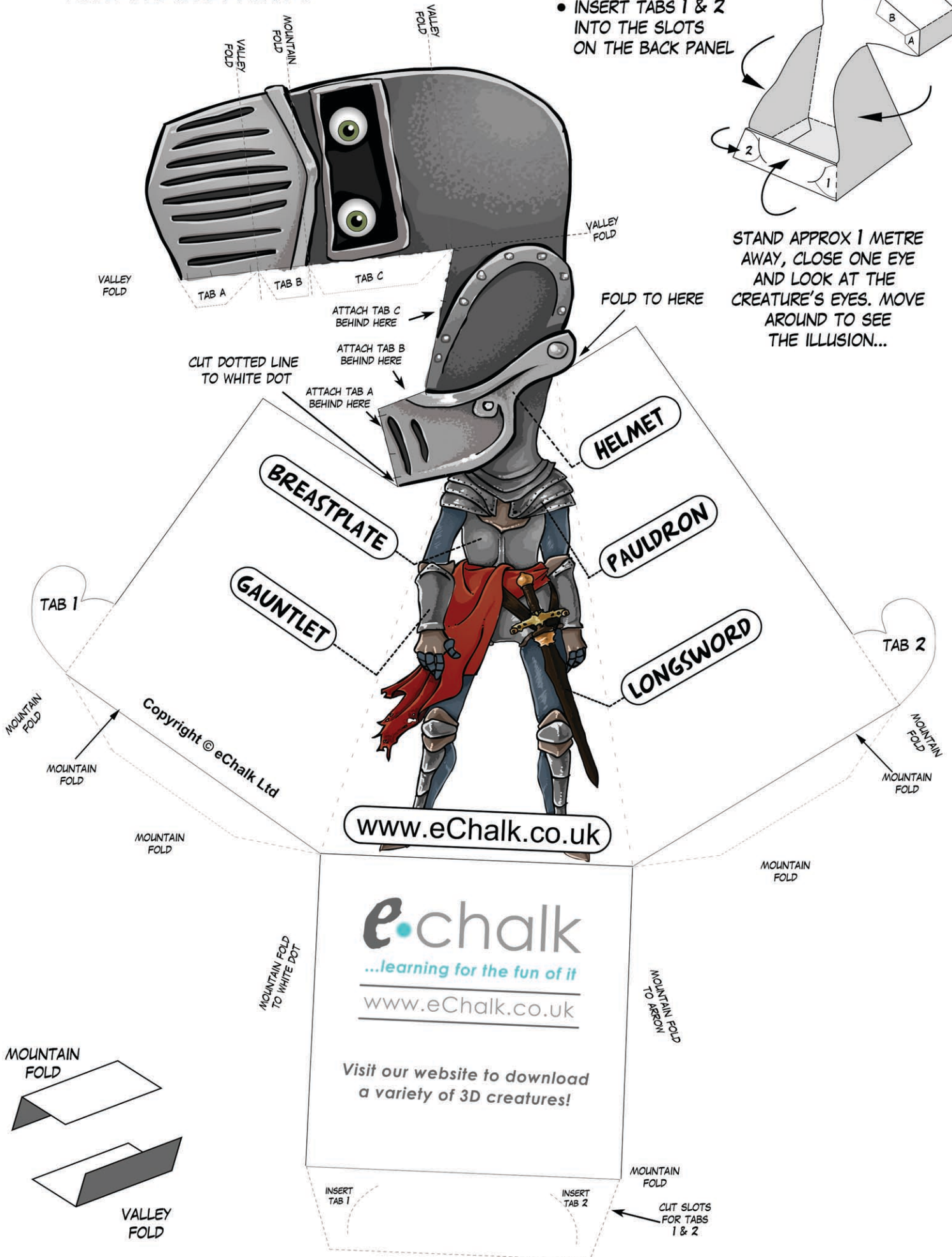
• CUT ALONG THE SOLID OUTLINES

• FOLD ALONG THE DOTTED LINES

• INSERT TABS 1 & 2 INTO THE SLOTS ON THE BACK PANEL



STAND APPROX 1 METRE AWAY, CLOSE ONE EYE AND LOOK AT THE CREATURE'S EYES. MOVE AROUND TO SEE THE ILLUSION...



www.eChalk.co.uk

e.chalk
 ...learning for the fun of it
www.eChalk.co.uk

Visit our website to download a variety of 3D creatures!

INSERT TAB 1

INSERT TAB 2

CUT SLOTS FOR TABS 1 & 2